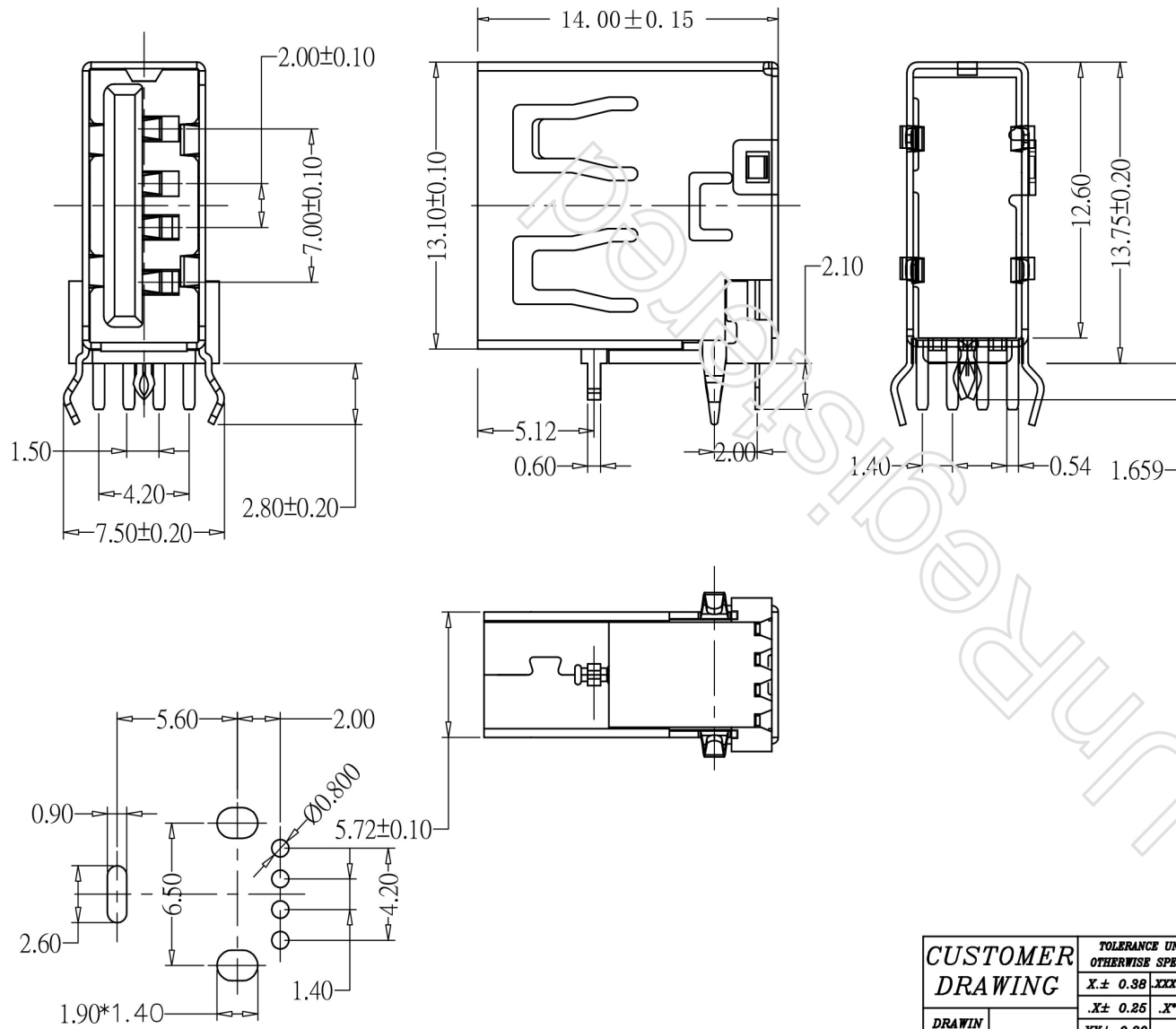


REV.	ECN NUMBER	DESCRIPTION	DRAWING	DATE



ELECTRICAL CHARACTERISTICS:
 CONTACT CURRENT RATING : 1.5 AMPERES.
 DIELECTRIC WITHSTANDING VOLTAGE : AC 500V R. M. S.
 INSULATION RESISTANCE : 1000 MEGOHMS MINIMUM AT DC 500V.
 CONTACT RESISTANCE : 30 MILLIOHM MAXIMUM.
 OPERATING TEMPERATURE : -55° TO+105° .

MECHANICAL CHARACTERISTICS:
 CONTACT INSERTION FORCE :3.57KG MAXIMUM.
 CONTACT SEPARATION FORCE :1.0KG MINIMUM.

MATERIALS:
 HOUSING:PBT+30% G/F, UL94V-0, BLACK.
 CONTACT:BRASS 2680R-H, T=0.25±0.015mm.
 SHELL:BRASS 2680R-H, T=0.30±0.01mm;

CONTACTS:GOLD FLASHED 1U", 3U", 5U", 10U", 15U", 30U".
 END OF NI-50U"MIN
 SHELL: NICKEL PLATED OVER 30~100U" MIN.

CUSTOMER DRAWING		TOLERANCE UNLESS OTHERWISE SPECIFIED		深圳市金航标电子有限公司		WWW.BDS666.COM	
		X± 0.38 XXX± 0.15		KH-AF90CWJ-14-0X		0755-83044319	
		.X± 0.25 .X*± 4*		PART NO.		DWG NO.	
		.XX± 0.20					
CHECKED	UNIT	TITLE					
APPROVE	SCALE						
DATE	SHEET	P R O J.		SIZE	R E V.		