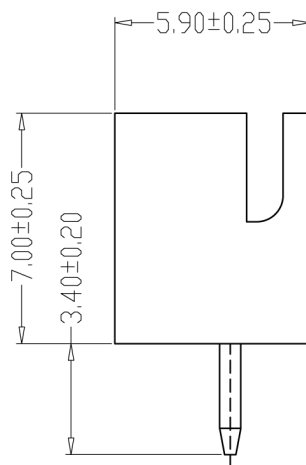
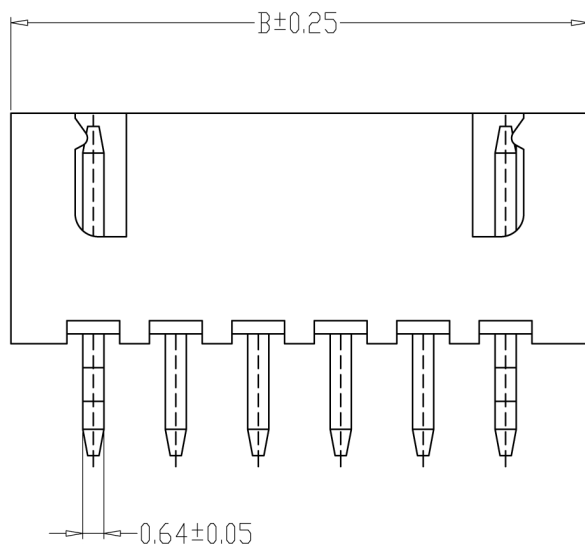
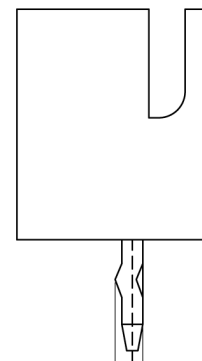


Kinghelm®

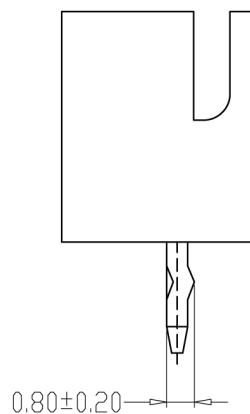
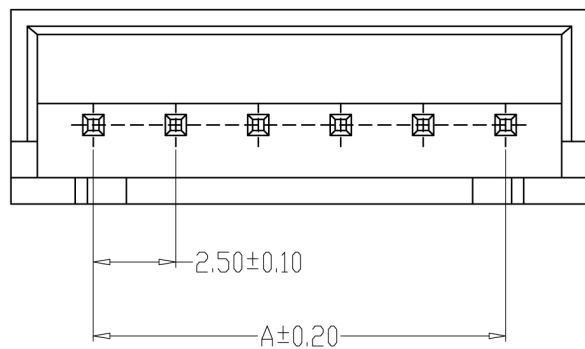
Model: KH-XH- (2-10) A-Z



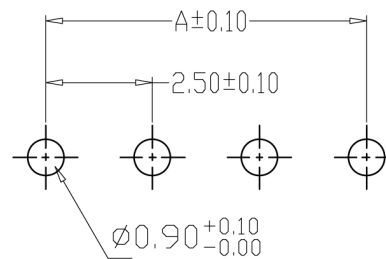
TYPE 1



TYPE 2



TYPE 3



PCB LAYOUT

SPECIFICATIONS

1. Current Rating: 3A AC, DC
2. Voltage Rating: 250V AC, DC
3. Temperature Range: $-25^{\circ}\text{C} \sim +85^{\circ}\text{C}$
4. Contact Resistance: $20\text{m}\Omega$ Max
5. Insulation Resistance: $1000\text{M}\Omega$ Min
6. Withstanding Voltage: 1000V AC/minute
7. Material: Wafer Nylon66, UL94V-0
7. PIN Brass Tin-plated

No.	Dimensions	
	A	B
A2501-02A	2.50	7.50
A2501-03A	5.00	10.00
A2501-04A	7.50	12.50
A2501-05A	10.00	15.00
A2501-06A	12.50	17.50
A2501-07A	15.00	20.00
A2501-08A	17.50	22.50
A2501-09A	20.00	25.00
A2501-10A	22.50	27.50
A2501-11A	25.00	30.00
A2501-12A	27.50	32.50
A2501-20A	47.50	52.50

DRAWN	DESCRIPTION	DATE	GENERAL TOLERANCE		DRAWN	Qian Yuesheng 2013, 07, 01	PART NO.	A2501-NA		REV.	A
			X.±0.25	X.±2'				TITLE	WAFER DIP TYPE		
			.X±0.20	.X±1'	CHECKED	Zhang Ming 2013, 07, 03	CUTM. NO.	Model: KH-XH-5A-Z			
			.XX±0.15	.XX±0.5'	APPROVED	Zhang Ming 2013, 07, 05	SHENZHEN KINGHELM ELECTRONIC CO., LTD.				
			.XXX±0.10	.XXX±0.5'	UNITS	MM	SCALE	1:1	WWW.BDS666.COM	0755-83044319	