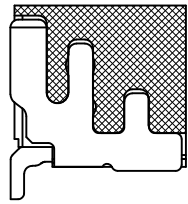


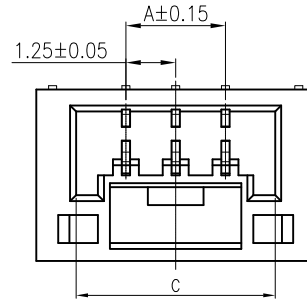
Kinghelm®

Engineer Drawing

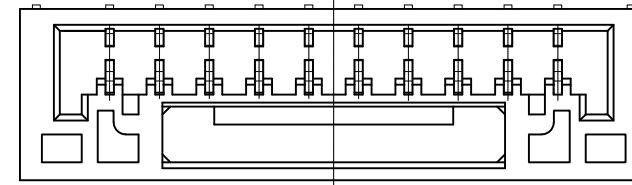
REV	ECN NO.	DESCRIPTION	DATE	APP'D
A/0		RELEASE TO PRODUCTION	01/29/18'	Scrth



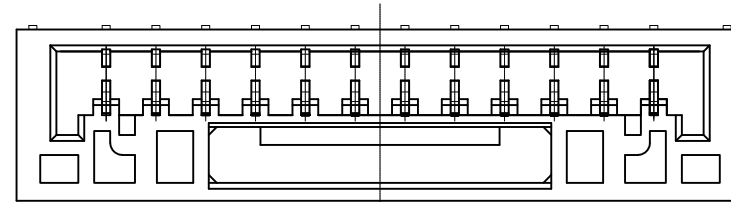
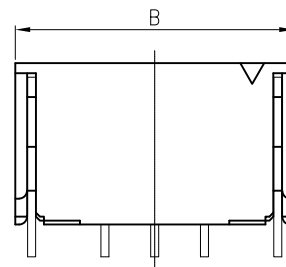
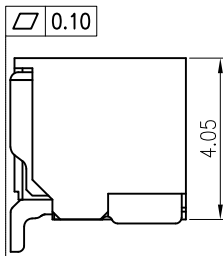
B-B



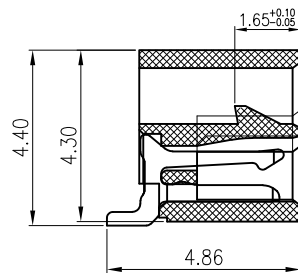
2~7pin



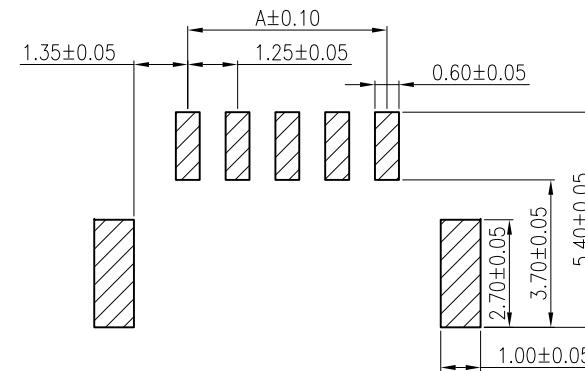
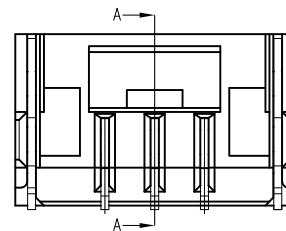
8~11pin



12~16pin



A-A



PCB LAYOUT

Poles	A	B	C
2	1.25	5.75	3.75
3	2.50	7.00	5.00
4	3.75	8.25	6.25
5	5.00	9.50	7.50
6	6.25	10.75	8.75
7	7.50	12.00	10.00
8	8.75	13.25	11.25
9	10.00	14.50	12.50
10	11.25	15.75	13.75
11	12.50	17.00	15.00
12	13.75	18.25	16.25
13	15.00	19.50	17.50
14	16.25	20.75	18.75
15	17.50	22.00	20.00

NOTES:

- Material:
Insulation:LCP/PA9T,UL94V-0(Nature)
Pin:Phosphor bronze/Tin-Plated
Tab:Phosphor bronze/Tin-Plated
- Current Rating: 1A AC,DC
- Voltage Rating: 100V AC,DC
- Temperature Rang: -25°C~+85°C
- Contact Resistance: 30mΩ Max
- Insulation Resistance: 100MΩ Min
- Withstanding Voltage: 500V AC/minute
- Ordering Code: A1252RS-x

TOLERANCE X. ±0.30 X.X ±0.25 X.XX ±0.20 Angle ±3° UNLESS OTHERWISE SPECIFIED	APPROVALS		DATE	深圳市金航标电子有限公司		www.kinghelm.com.cn	
	DRAWN <i>Zhang Liao Tao</i>		01/29/18'	KH-A1252RS-13P		0755-28190160	
	CHK'D <i>Art Phi</i>		01/29/18'	PART NO. A1252RS-x		TITLE: WIRE TO BOARD, PLUG, PITCH 1.25mm, CRIMP TYPE, ASSEMBLY	
	APP'D <i>Art Phi</i>		01/29/18'	DRAWING NO. EN-A1252RS-x			
UNITS mm	SCALE 1:1	SIZE: A4	⊕	SHEET 1 OF 1	001	REV.A/0	