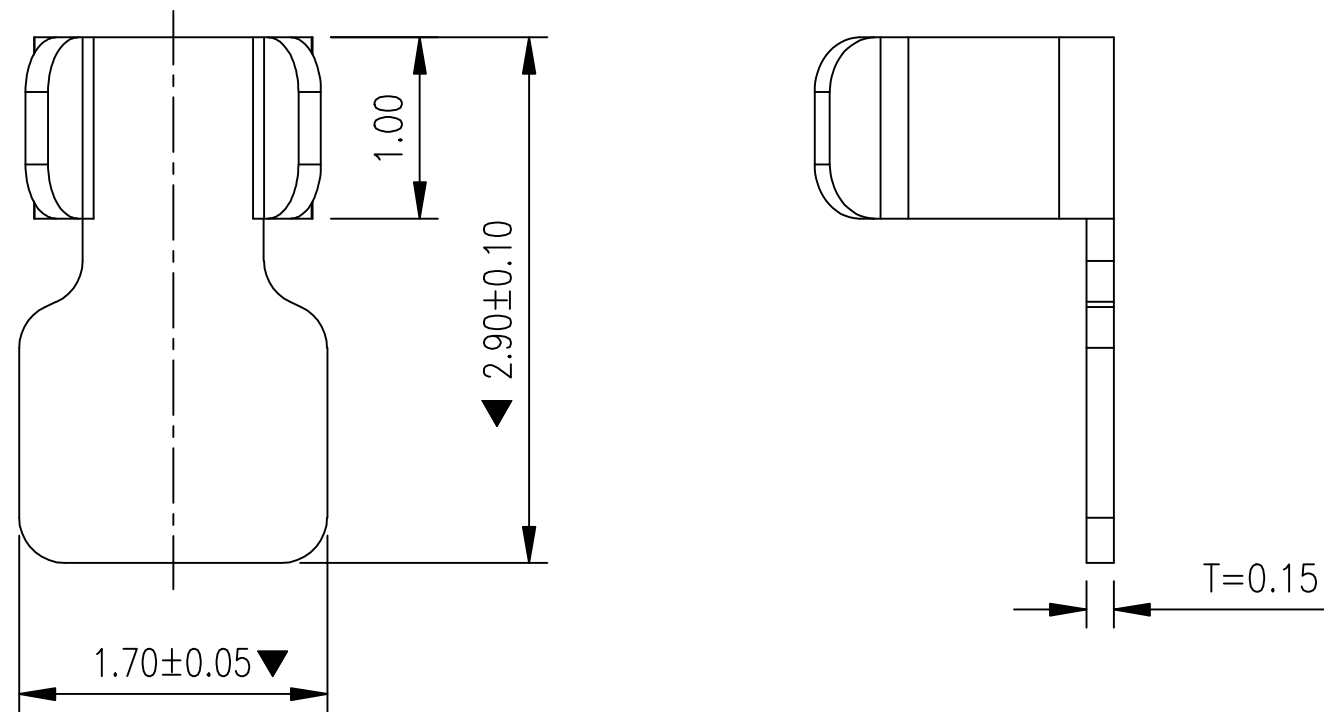
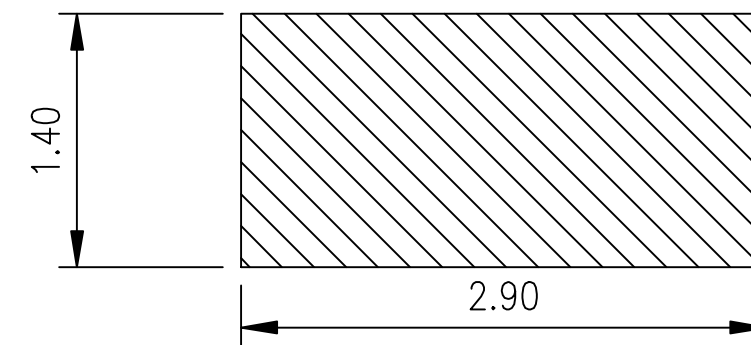
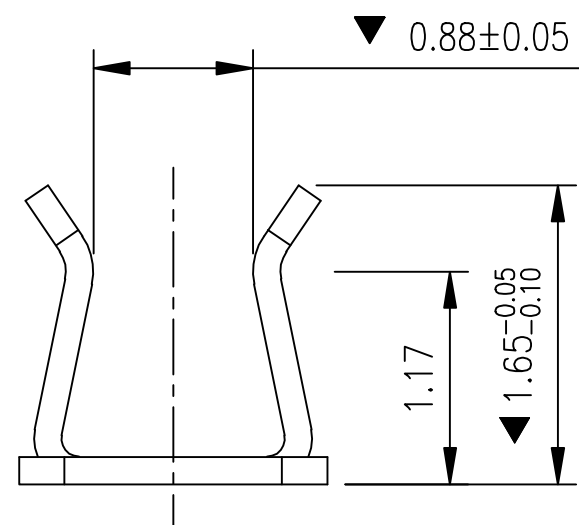


Rev.	ECN Number	Description	Date	Drawn	Checkd	Approved

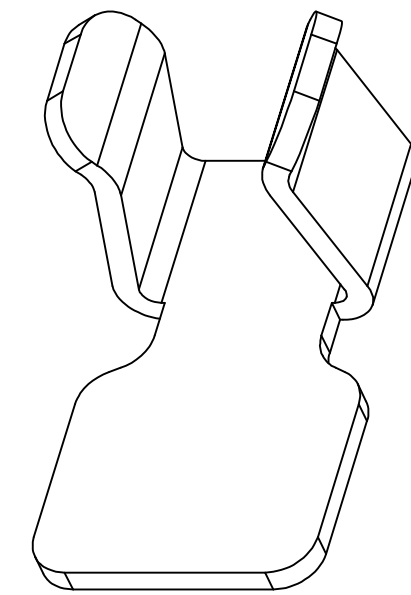


技术要求:

1. 材质: 不锈钢 SUS301,  $T=0.15\pm0.005$ ;
- ▼ 2. 端子锡脚焊接面和接触面不可有毛边, 其他部位毛边最大 0.03mm;
3. 扭曲:  $45^\circ/1000\text{mm}$ , 拱形  $5\text{mm}/1000\text{mm}$ ;
4. 标示有“▼”符号的为重点控制和检验尺寸;
5. 未标注之 R MAX R0.13;
6. 电镀须满足 24 小时盐雾测试;
7. 寿命测试 > 2 万次, 产品弹力要求在 60gf ~ 80gf 之间;
8. 镍底 50 ~ 80u"min, 产品外表面镀锡 80 ~ 100U"MIN



焊盘尺寸  
尺寸公差 ±0.05



TITLE  
**客户图**  
RF CABLE(φ0.81) CAN CLIP  
L1.5\*W1.20\*H1.30

GENERAL TOLERANCE	
XX. ±0.50	
X. ±0.35	X.° ±2.0°
.X ±0.25	.X° ±1.0°
.XX ±0.15	.XX° ±0.5°

SCALE: 1:1  
UNIT: mm  
SIZE: A4

DRAWN  
CHECK  
APPROVE

DATE  
DATE  
DATE

DWG. NO.  
681-0075B-01  
PARIS NO.(INIENDED USE)  
0075B1

深圳市金航标电子有限公司  
KH-PBJ-2917165

www.kinghelm.com.cn  
0755-28190160

REV. A  
SHEET 1/2